

CIMON-Xpanel

Total Solution for Industrial Automation

CIMON-Xpanel features

- Embedding-High performance mobile CPU(PXA255 400MHz)
- High color graphic display(65536 colors)
- Various external data interfaces(USB, SD memory)
- The best HMI panel for various industrial automation applications
- Powerful device communication : 1 Ethernet, 2 RS232/RS422/485
- Sufficient internal memory for large scale HMI system
- High resolution 4 wire resistive touch screen





CIMON-Xpanel

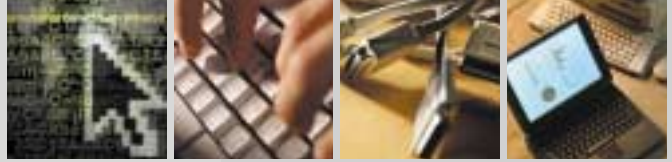
Total Solution for Industrial Automation

The new HMI panel that inherited high technologies of CIMON SCADA PLCs opens new era.

Windows CE based New Touch

CIMON create a HMI panel for automation fields of the future world.

- Adapts high performance mobile CPU
- Provides elegant graphic display by high color TFT LCD
- Embedding sufficient storage and memory for large scale HMI



CONTENTS

Feature ————— 04

- Xpanel opens a new era of HMI panel.
- Easy operating Environment
- Space saving size
- Easy Upgrade
- Other function
- Flexible network
- Network Architecture
- Easy and powerful design tool : Xpnael Designer

Items ————— 09

- XT05MA / XT05MS
- XT06CA
- XT10CA
- XT12CA

Package Contents ————— 11



Features of CIMON-Xpanel

Xpanel opens a new era of HMI panel.

- Embedded high speed mobile processor,(Intel PXA 255 400MHz)
- Provides sufficient memory space.
 - SDRAM : 64MB
 - Flash memory : up to 64MB (32MB standard)
 - Data storage : up to 40MB(8MB standard)
- High color LCD display (65536 colors)
- High resolution display (800×600 pixels)
- High resolution touch screen (4wire resistive)

Easy operating Environment

- Windows CE based operation system
- Project data management by active-Sync.

Space saving size

- One of the most thin panel
- Thin panel size provides more freedom on space limited system.
(XT10CA : W280mm×H220mm×D47mm)

Easy Upgrade

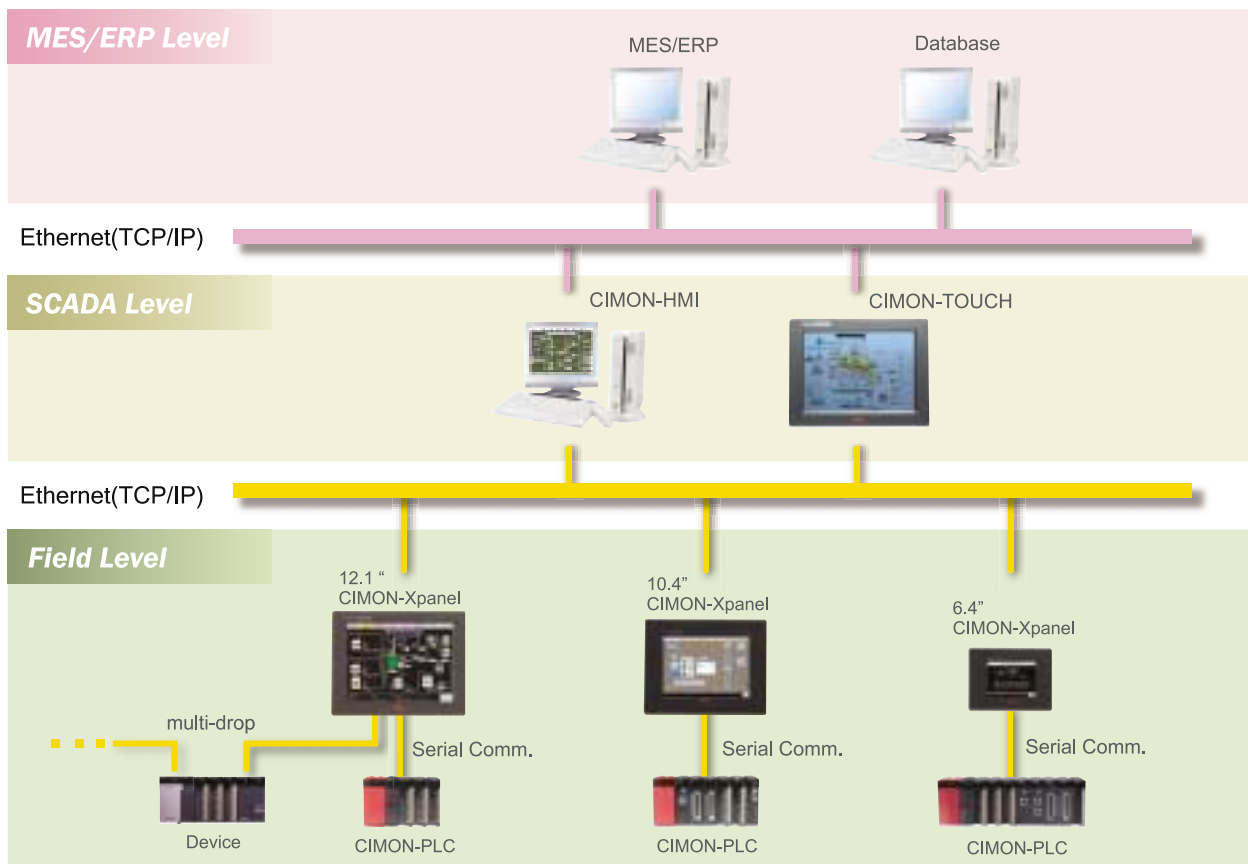
- Operating system upgrade by Ethernet.
- Runtime application software upgrade by Xpanel Designer
- Automatic version check and message display
- Upgrade files can be downloaded by internet freely

Other function

- SD Memory slot provides additional storage space
- Various external devices will be utilized by USB
- Diagnostic tools make easy for trouble shooting

Flexible network

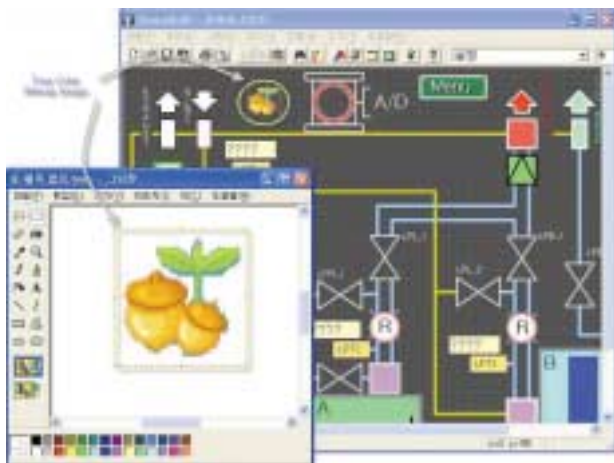
- Provides various device communication media
 - Ethernet 1 port
 - RS232C/422/485 1 port
 - Additional RS232C 1 port
 - USB Host interface for link with design tool software
- Provides network slave functionality for communication with CIMON HMI/SCADA
- Network Architecture
 - Maximum 3 ports can be utilized simultaneously for device communication(RS232C, 1RS422/485, 1 Ethernet)
 - Supports multi-drop topology(RS422/485, Ethernet)
 - Provides network slave function for communication with SCADA system



Features of CIMON-Xpanel

■ Easy and powerful design tool : Xpnael Designer

- Provides easy and powerful design environment, Which is Similar to our CIMON-HMI/SCADA.
- Fast data downloading by USB
 - Project data up/down-load by USB interface
 - Easy project data management by Active-Sync.
- Supports high color graphic image(up to 16bits)



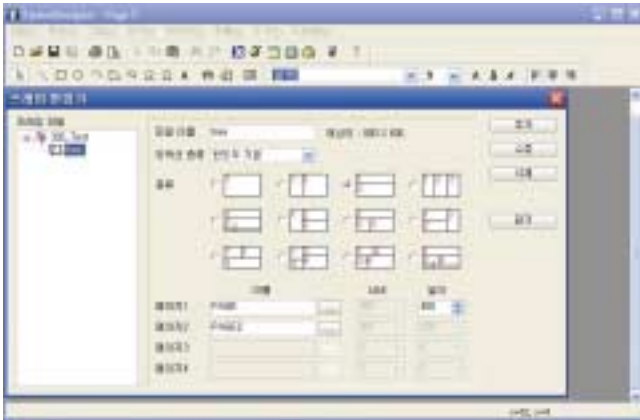
- External graphic images can be imported/exported by using clipboard.
- Supports transparent color function.
- Supports high color(65536 colors)

- Supports animation GIF format



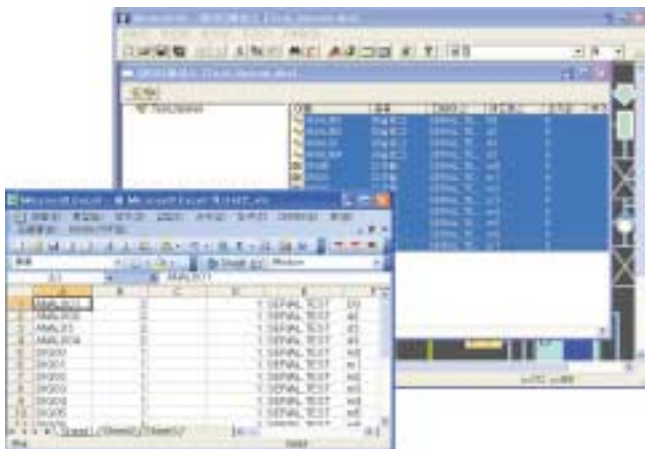
- Xpnael supports animation GIF in runtime
- Xpnael Designer provides creating and editing tools for animated graphic object.
- Provides simulation tool for animated graphic object
- Provides user modifiable graphic library

- Frame function provides easy solution for simultaneous displaying multiple monitoring pages.



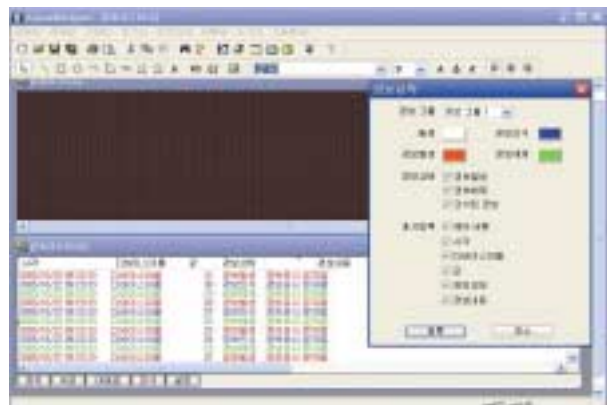
- Supports multi-windows monitoring by frame function
- Provides frame editor for positioning or sizing of each window.
- Provides various ready to use frame settings

- TAG database can be exported (imported) to (from) MS Excel



- Point data are managed by internal real-time database as TAG
- TAG DB can be imported/exported from/to Excel. sheet
- TAGs are managed in hierarchical structure by it's name

- Alarm function supports acknowledge mechanism and historical reviewing of designated group

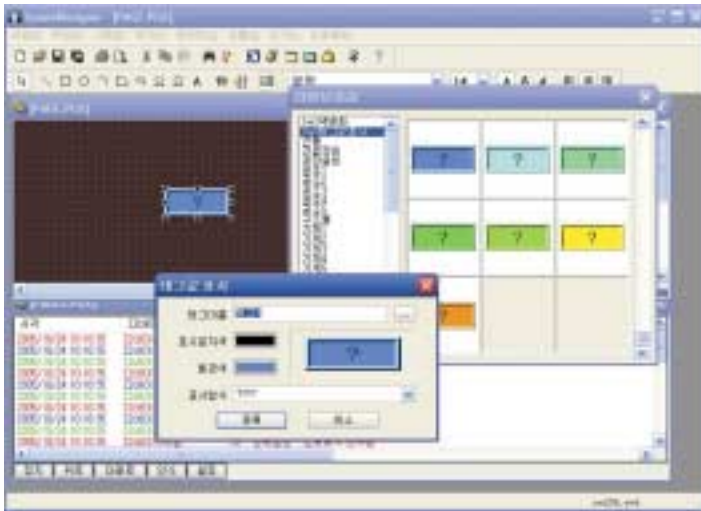


- Supports 10 alarm groups
- Each alarm group stores max.100 latest alarms.
- Various Filtering function makes easy to analyze alarm event
- Provides alarm acknowledge functionalities
- Alarm action can be designated to each alarming point.

Features of CIMON–Xpanel

■ Easy and powerful design tool : Xpnael Designer

- Provides various graphic wizard objects which make easy to link TAG and graphic object



- Provides graphic control wizard
- Wizard makes the job easy and fast to assign control and TAG on graphic objects

- Logged data by data-logger function can be visualized by trend object

- 0.1 Second minimum sampling rate.
- TAGs are managed by logging group.
- Trend function can be used for visualizing logged data
- Trend can be zoom in or out
- Historical trend function is presented

- Provides C-style script language and various embedded sub-routines for flexible design

- 'C' language style script is presented
- Various internal subroutine function are provided for data manipulation
- Scripts are activated to execution by event, time period or function call.

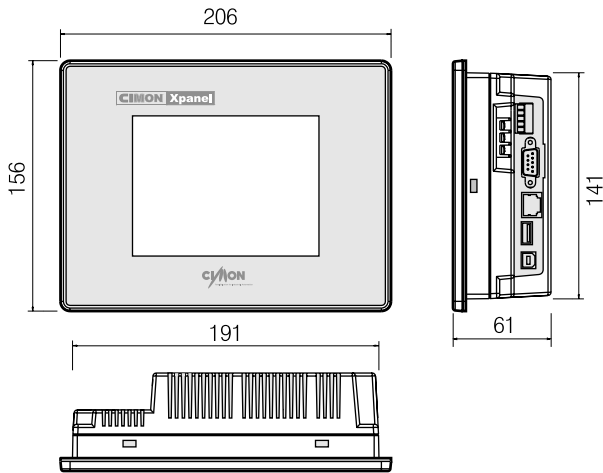
- Other function

- internal system activity log is presented for trouble shooting
- Communication frame can be monitored with presented tool

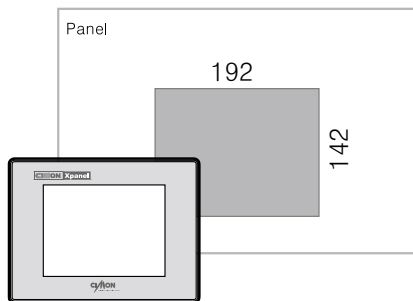
Unit mm

XT05MA / XT05SA

■ Dimensions



■ Panel cut



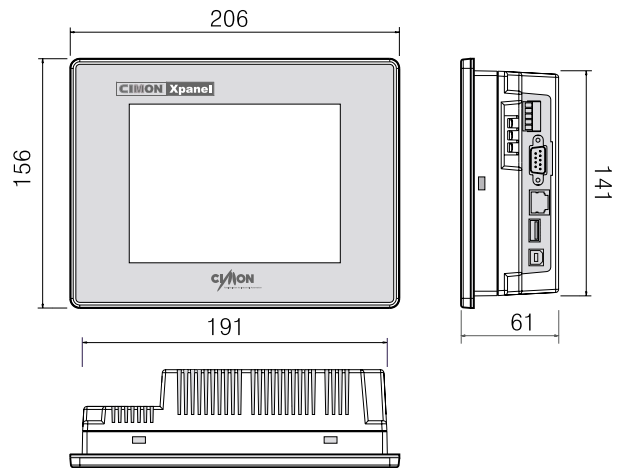
■ Specification

Items	CM1-XT05MA-A	CM1-XT05SA-A
	CM1-XT05MA-D	CM1-XT05SA-D
Display	Mono LCD	CSTN LCD
LCD Size	5.6"	
Touch Screen	320×240 Resistive	
Color	16 Gray	256
RAM	64MB SDRAM	
Storage	32MB Flash(up to 64MB)	
Operating System	MicroSoft Windows CE	
Programming Tool	Xpanel Designer	
Interface	RS232/422/485	1Port
	485Auto Toggle	Supported
	Ethernet	10Base T, 100Base-TX 1Port
	USB (Host)	1 Port(for Printer, external storage)
	Tool Connector	1 Port(for Designer)

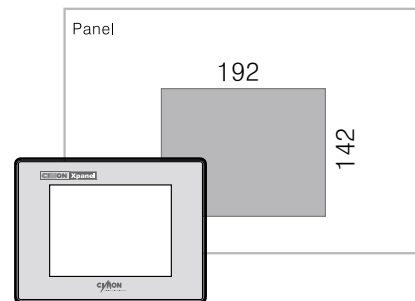
A: AC power input(90~240V AC) D : DC power input(24V DC)

XT06CA

■ Dimensions



■ Panel cut



■ Specification

Items	CM1-XT06CA-A
	CM1-XT06CA-D
Display	TFT Color LCD
LCD Size	6.4"
Touch Screen	640×480 Resistive
Color	65536
RAM	64MB SDRAM
Storage	32MB Flash(up to 64MB)
Operating System	MicroSoft Windows CE
Programming Tool	Xpanel Designer
Interface	RS232/422/485
	485Auto Toggle
	Ethernet
	USB (Host)
	Tool Connector

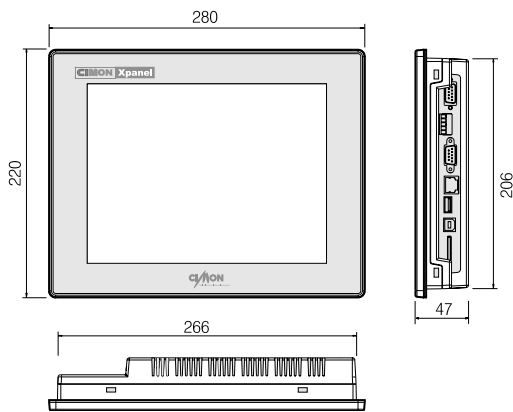
A: AC power input(90~240V AC) D : DC power input(24V DC)

Features of CIMON-Xpanel

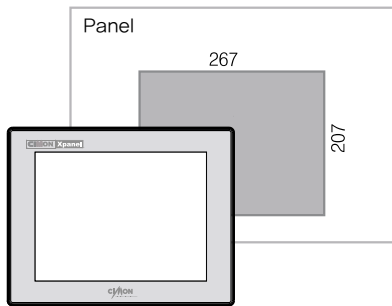
Unit mm

XT10CA

■ Dimensions



■ Panel cut



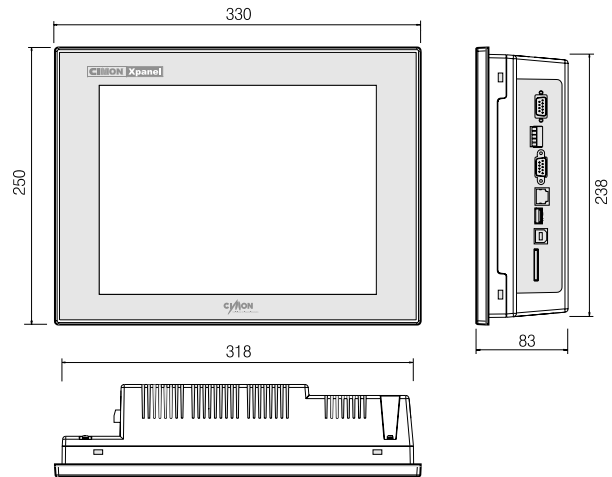
■ Specification

Items	CM1-XT10CA-A CM1-XT10CA-D	
Display	TFT Color LCD	
LCD Size	10.4"	
Touch Screen	800×600 Resistive	
Color	65536	
RAM	64MB SDRAM	
Storage	32MB Flash(up to 64MB)	
Interface	RS232/422/485 485Auto Toggle	1Port
	RS-232C	1Port
	Ethernet	10BaseT, 100Base-TX1
	USB(Host)	1 Port
	Tool Connector	1 Port
	SD Card Slot	SD Memory Slot 1ea

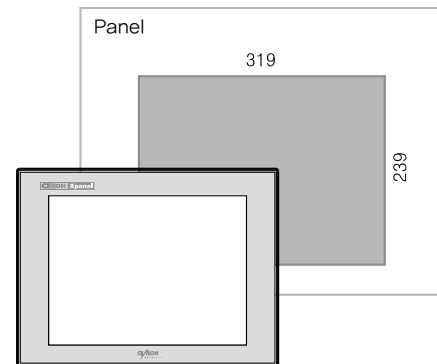
A: AC power input(90~240V AC) D : DC power input(24V DC)

XT12CA

■ Dimensions



■ Panel cut



■ Specification

Items	CM1-XT12CA-A CM1-XT12CA-D	
Display	TFT Color LCD	
LCD Size	12.1"	
Touch Screen	800×600 Resistive	
Color	65536	
RAM	64MB SDRAM	
Storage	32MB Flash(up to 64MB)	
Interface	RS232/422/485 485Auto Toggle	1Port
	RS-232C	1Port
	Ethernet	10BaseT, 100Base-TX1
	USB(Host)	1 Port
	Tool Connector	1 Port
	SD Card Slot	SD Memory Slot 1ea

A: AC power input(Free Voltage)

Example of model name

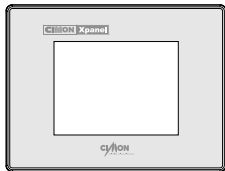
XT05/06/10/12	LCD Size
M/S/C	Initial character of Mono/STN/Color
A	Revision
-A/-D	AC/DC (AC: 100~240, DC: 24V)

XT05MA-D → 5.6" Mono DC24V input

XT10CA-A → 10.4" Color TFT LCD AC input

Package Contents

▶ Xpanel Unit



▶ Fastener : 8



▶ 5P Connector



▶ Screw Driver



▶ USB Cable



▶ CD



▶ Installation Guide





KDT Systems Co., Ltd.

Since first known by the internally developed CIMON-HMI software,

KDT Systems was exerting its best efforts to provide the proprietary technology in the automation area for the customers.

As a result, we have continuously developed various automation controllers and software with enhanced performance and stability.

We are proud that these products have decisively contributed to overwhelming market positioning of the customers.

KDT Systems is committed to excellence in the industry automation and aims at providing the products for more useful and stabilized automation system through development of the state-of-art technology. Our ultimate goal is to provide the total solution for the industry automation.

Product line


- CIMON-HMI: HMI/SCADA software
- CIMON-PLC: Highly functional PLC
- CIMON-RTU: RTU for remote site measurement/control
- CIMON-PPC: Touch panel type PC
- CIMON-IPC: High performance industrial PC
- CIMON-PAD: Wireless data communication terminal
- CIMON-TOUCH: Windows-based HMI device
- CIMON-Xpanel : Windows CE Based new Touch

Fields of business

- Various automated water treatment systems (Water purification/Waste water treatment system)
- Automation of all assembly industries including automobile industry
- Automation of electric power system (Power generation/transmission/distribution)
- Monitoring/control of the special equipments such as semiconductor equipment and incinerator.
- Monitoring/control of all industrial equipments such as BAS, automated warehouse, and parking facility

Running environment

· OS	Windows 98/Me/2000/XP
· Computer	Pentium or faster CPU, IBM compatible
· Memory	64MB or more is recommended
· HDD	300MB or more is recommended
· Graphic card	VGA, SVGA, XGA
· Others	Mouse, touch panel

 **Safety Precautions** For proper usage of the products described in this brochure, make sure to read the Product Manual before using the product.



주|케이디티 시스템즈
KDT SYSTEMS CO.,LTD.

www.kdtsys.com

TEL : +82-31-322-8303 FAX : +82-31-332-8343